

CV Boot Clamp Pliers (Angled/Straight)

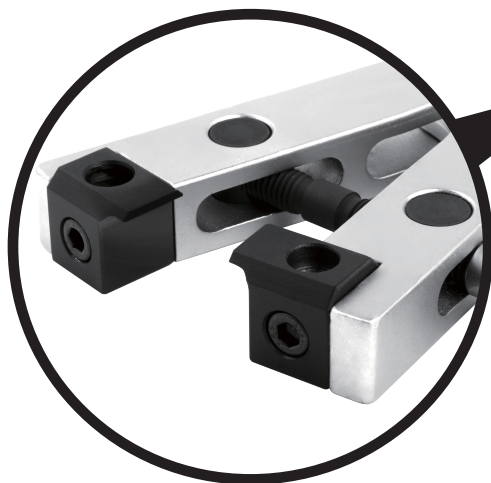
Art. Nr: PT5610

Chassis



Features

- For fitting the high strength stainless steel clamps on modern vehicles where a torque setting is specified. (23-30 Nm typically)
- The two way jaws are designed to work in hard to reach areas.
- Suitable for VAG, Opel, Vauxhall, Ford, etc.



3/8"
dr.



Straight



Angled