

# Pro**Meister**



## User Guide

### 3/8" Impact Ratchet Wrench

Produced in Taiwan for  
**Bileko Car Parts AB**  
P.O. Box 542  
S-645 25 Strängnäs, Sweden  
Tel: +46 771 72 00 00  
[www.promeister.com](http://www.promeister.com)



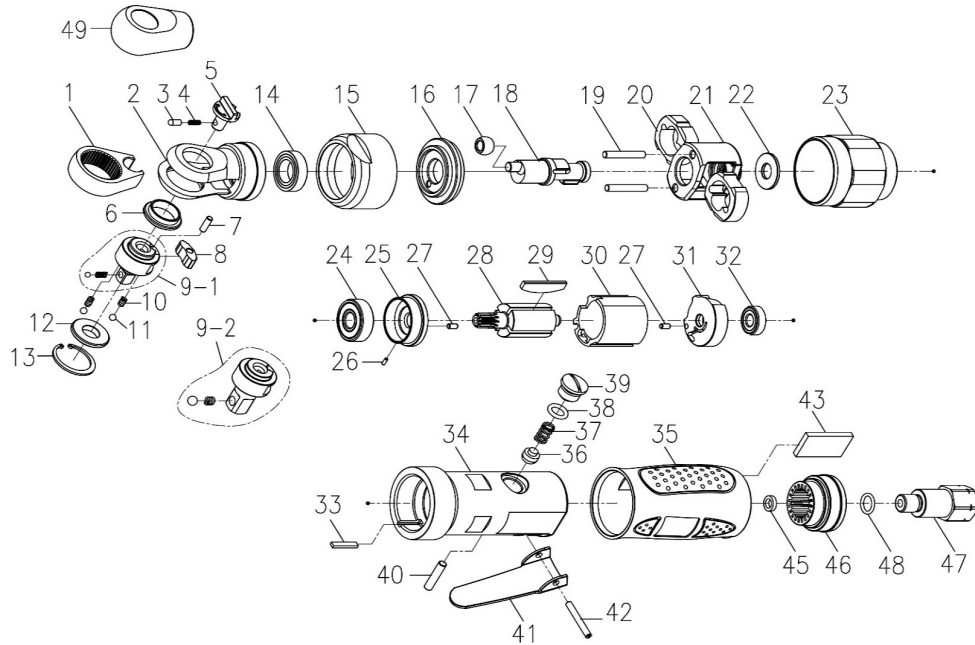
Luftwerkzeuge  
Tryckluftsverktyg  
Trykkluftsverktøy

Trykluftværktøj  
Paineilmatyökalut

Art. Nr: PT6126

RVNR-01

## Product Specifications



Art. Nr	SQUARE DRIVER	FREE SPEED	MAX. TORQUE @ 5sec.		OVERALL LENGTH		AIR INLET	AIR HOSE I.D.	AVERAGE AIR CONSUMPTION		NET WEIGHT	
	inch	rpm	ft-lb	Nm	inch	mm	inch	inch	cfm	L/min	lb	kg
PT6126	3/8	550	27.3	37	7.5	190	1/4	3/8	3.1	88	1.5	0.68

NOISE				VIBRATION	
No Load		Loaded			
Sound Pressure dB(A) (LpA)	Sound Power dB(A) (LwA)	Sound Pressure dB(A) (LpA)	Sound Power dB(A) (LwA)	m/s <sup>2</sup>	K
85.1	96.1	81	92	4.5	1.5

## Product Specifications

Index No.	Part No.	Description	Q'ty
1	222F-009	Ratchet Yoke	1
2	201-013	Ratchet Housing	1
3	221-003-B	Lock Pin	1
4	221-002	Spring	1
5	222F-001	Reverse Knob	1
6	222F-004	Thrust Washer	1
7	00-3435	Pin (ψ3×9L)	1
8	222F-005	Ratchet Pawl	1
9-1	222F-006A	1/4" Ratchet Anvil	"1 set"
	221-008	Spring	
	00-3816	Steel Ball (ψ2.5)	
9-2	222F-006B	3/8" Ratchet Anvil	"1 set"
	216-008	Spring	
	00-3814	Steel Ball (3/16")	
10	222F-007	Spring	2
11	00-3826	Steel Ball (ψ3)	2
12	222F-032A	Thrust Washer (1/4")	1
	222F-032B	Thrust Washer (3/8")	
13	222F-052	Snap Ring	1
14	00-2397	Ball Bearing (6801ZZ)	1
15	201-033	Nut	1
16	201-019	Hammer Cage Cover	1
17	201-010	Drive Bushing	1
18	201-011	Crank Shaft	1
19	201-016	Hammer Pin	2
20	201-017	Hammer	2
21	201-012	Hammer Cage	1
22	201-020	Rear Washer	1

Index No.	Part No.	Description	Q'ty
23	201-002	Clutch Housing	1
24	00-2332A	Ball Bearing (608ZZ)	1
25	221-019	Front End Plate	1
26	00-3334	Spring Pin (ψ1.5×4L)	1
27	00-3333	Spring Pin (ψ2.5×5L)	2
28	221-020	Rotor	1
29	221-021	Rotor Blade	4
30	221-022	Cylinder	1
31	221-023	Rear End Plate	1
32	00-2340	Ball Bearing (696ZZ)	1
33	216-037	Seal Lump	1
34	201-001	Motor Housing	1
35	201-043	Housing Rubber	1
36	216-028	Valve Throttle	1
37	216-029B	Spring	1
38	00-4123	O-Ring (ψ8.8×ψ1.9)	1
39	221-030	Screw Cap	1
40	00-3410	Pin (ψ4×18L)	1
41	201-046	Throttle Lever	1
42	00-3302	Spring Pin (ψ3×24L)	1
43	201-038	Muffler	1
45	201-050	Bushing	1
46	201-042	Hose Adapter	1
47	201-034A	Air Inlet (1/4" PF)	1
	201-034B	Air Inlet (1/4" PT)	
	201-034C	Air Inlet (1/4" NPT)	
48	00-4141	O-Ring (ψ8×ψ1.5)	1
49	201-047	Front Rubber (for option)	1

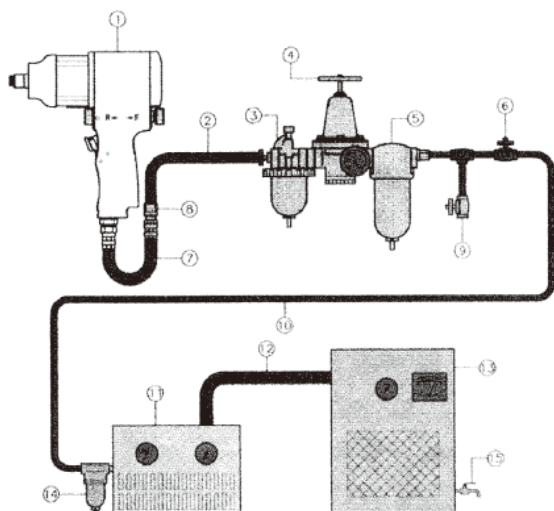
## Operating Instructions



For your own safety, please read the operating instruction carefully before use the air tool.

1. Please always keep the proper pressure of air inlet at 90psi (Max 6.3dB) in order to protect your own safety and maintain the longest tool life. Pour a few drips of lubricating oil in the air inlet regularly.
2. Do not wear loose or baggy clothing when you operate the air tool. Remove anything that may be caused injury, ie. neckties, jewelry etc. Tie back long hair and wear eye protection.
3. It is the owner's responsibility to lubricate the air tool properly, but do not use any inflammable or volatile oils for lubricating, ie. diesel oil, gasoline, or kerosene
4. Make sure to use impact-quality sockets only, do not use hand-tool sockets. The crack of sockets will reduce the torque of air tool and may cause serious injury.
5. Do not depress trigger when connecting the air supply hose.
6. Protect the air lines from damage or puncture.
7. Never point an air tool at oneself or any other person. It could cause serious injury.
8. Keep all nuts, bolts and screws tight and ensure equipment is in safe working condition.

## Air Tools and Pipe Fitting System



1. Air Tool
2. Air Hose 3/8"
3. Oiler
4. Pressure Regulator
5. Filter
6. Shut Off Valve
7. Lead Hose
8. Coupler body and connector
9. Drain Daily
10. 1/2" or larger pipe and fitting
11. Air Dryer
12. 1" or larger pipe and fitting
13. Air Compressor
14. Auto Drain
15. Drain Daily

## Caution

1. To Protect air tools, we strongly recommend that you install a pneumatic filter, moisture separator, regulator and lubricator between the air supply and Air Tools
2. Please notice if the moisture in pipe is too much and if your air compressor is made drain daily
3. Be sure to fill in SAE#10 lubricating oil into the air inlet before using air tools, and always after daily use.
4. Before using air tools, please keep proper air pressure
5. Don't fill in too viscid oil into air inlet, or it will lessen the air motor power.

SYMPTOM	POSSIBLE CAUSES	CORRECTIVE ACTION
Tool runs slowly down or doesn't work	1. Grit or gum in motor set.  2. Low air pressure.  3. Dry or rusty motor set  4. No oil in tool.  5. Worn ball bearing.	1a. Drop diesel oil from air inlet to flush motor set, and then drop SAE#10 motor oil to lubricate it. 1b. Disassemble tool and repair it.  2. Check the air compressor meter and adjust the compressor regulator.  3. Lubricate the tool with SAE#10 motor oil or sewing machine oil.  4. Do the same as point 3  5. Replace ball bearing.
Reduced torque	1. Lack of lubrication  2. Regulator set in wrong position  3. Low pressure.  4. Worn impact mechanism	1. Lubricate the tool.  2. Adjust the regulator to correct position.  3. Check the pressure of air inlet to see if it is at correct number 90 PSI.  4. Replace parts
Doesn't impact totally but can run free	Serious worn parts or damaged parts of impact set.	Disassemble tool and replace parts
Self-running	Trigger system: 1. Valve stem can't remove back. 2. Rusty or deformed steel ball. 3. Rusty or cracked spring	Replace parts
Moisture blowing out of tool	1. Water in tank.  2. Water in the air lines/hose	1. Drain tank. Oil tool and run until no Water is evident. Oil tool again and run 1-2 seconds. 2a. Install a water separator/filter. Note: Separators only work properly when the air passing through the separator is cool. Locate the separator/filter as far as possible from the compressor. 2b. Install an air dryer.

## EC Declaration of Conformity

We,

Bileko Car Parts AB  
P.O. Box 542,  
S-645 25 Strängnäs,  
Sweden

Herewith declare that the following machine complies with the appropriate basic safety and health requirements of the EC Directive based on its design and type, as brought into circulation by us.

In case of alteration of the machine, not agreed upon by us, this declaration will lose its validity:

Description:

AIR RATCHET WRENCH

Type:

Art nr: PT6126

Applicable EC Directives:

Machinery Directive: 2006/42/EC


Applicable Harmonized

Standards:

EN ISO 11148-6:2012  
EN 15744:2008  
EN ISO 28927-2:2010

Date / Authorized Signature:

2021-03-19 ...



Title of Signatory:

Nathalie Ahlsén  
Purchasing & Category Manager

